



Interface protection for system requiring three maximum voltage thresholds
PMVF90

Product designation

Product type designation

General characteristics

Description

For system requiring three maximum voltage thresholds

Type of system

Single-phase and three-phase, with and without neutral

Power supply

Operating voltage range

22...264VAC / 22...264VDC

Rated frequency

Hz 45...55

Power consumption Max

VA 6.2

Power dissipation Max

W 2

Auxiliary supply

Rated auxiliary supply voltage Us

AC

| | | |
|-----|-----|-----|
| min | VAC | 24 |
| Max | VAC | 240 |

DC

| | | |
|-----|-----|-----|
| min | VDC | 24 |
| Max | VDC | 240 |

Power consumption

AC (Max)

| | |
|----|------------------------------------|
| VA | 2.5VA at 24VAC; 6.2VA at 240VAC |
|----|------------------------------------|

DC (Max)

| | |
|----|---------------------------------|
| VA | 60mA at 24VDC; 7mA at 240VDC |
|----|---------------------------------|

Power dissipation

AC (Max)

| | |
|---|--------------------------------|
| W | 1.6W at 24VAC; 2W at 240VAC |
|---|--------------------------------|

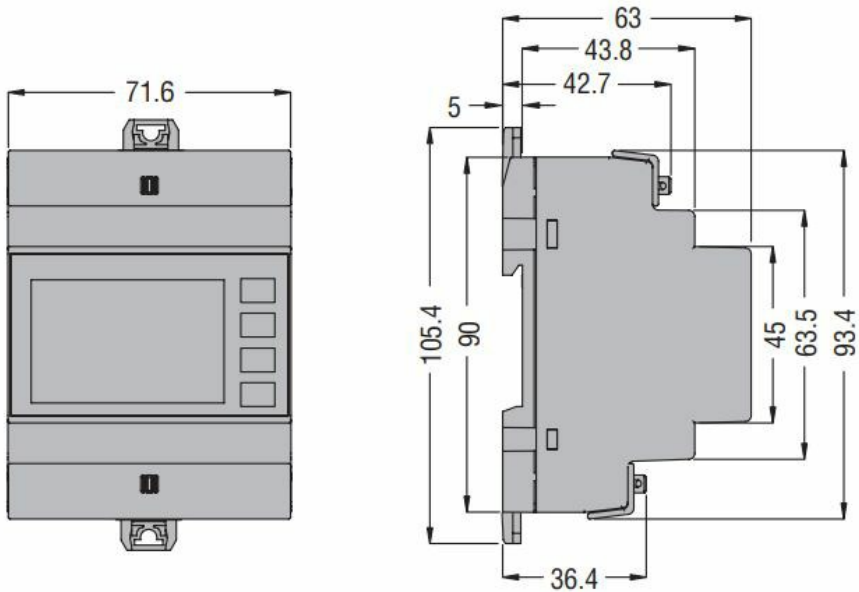
DC (Max)

| | |
|---|----------------------------------|
| W | 1.5W at 24VDC; 1.7W at 240VDC |
|---|----------------------------------|

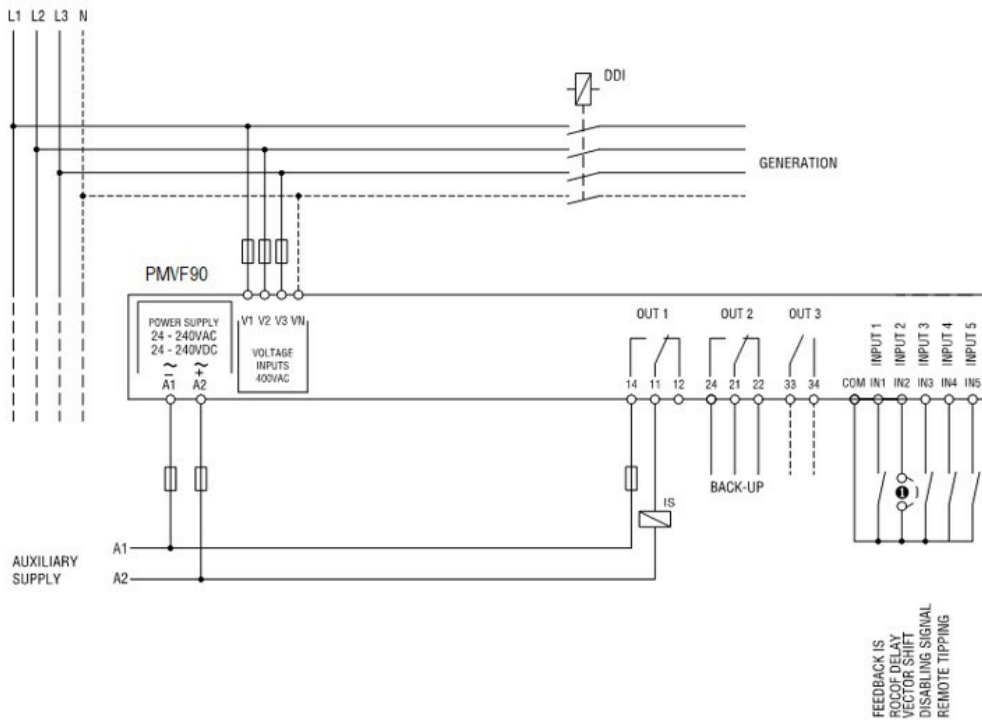
| | | |
|---|------------|--|
| Immunity time for microbreakings | ms | 240VAC 50Hz ≤2000ms 240VDC ≤1000ms 24VAC 50Hz ≤30ms 24VDC ≤15ms |
| Voltage inputs | | |
| Maximum rated operational voltage | | 400VAC L-L; 230VAC L-N 50Hz |
| Measurement range | V | 10...520VAC L-L; 5...300VAC L-N |
| Frequency range | Hz | 45...55 |
| Current inputs | | |
| Measurement method | | TRMS |
| Relay outputs | | |
| Number of relays | Nr. | 3 |
| Contact arrangement | | 2 changeover contacts + 1NO |
| Rated operational voltage AC (IEC) | VAC | 250 |
| UL/CSA and IEC/EN 60947-5-1 designation | | For OUT1-OUT2 contact: 8A 250VAC AC1/C300, 8A 30VDC For OUT3 contact: 2A 250VAC AC1/C300; 2A 30VDC |
| Digital inputs | | |
| Number and type of inputs | | 5 to be used with dry contact with common terminal |
| Input current | mA | 6 |
| Connections | | |
| Terminals type | | Screw - removable |
| Tightening torque for terminals | max max | Nm lbin 0.44 4 |
| Conductor cross section | | |
| AWG/Kcmil | min Max | AWG AWG 24 12 |
| IEC | min Max | mm ² mm ² 0.2 2.5 |
| Insulations | | |
| Rated insulation voltage Ui | V | 300 |
| Housing | | |
| Execution (n° of modules) | | 4 |
| Material | | Polyamide |

| | | |
|--------------------------|---|-------------------|
| Mounting | 35mm DIN rail or screw-type by means of clips removable | |
| IEC degree of protection | IP40 on front; IP20 at terminals | |
| Dimensions (W x H x D) | mm | 71.6 x 105.4 x 63 |
| Weight | g | 326 |

Dimensions



Wiring diagrams



Certifications and compliance

Compliance

- IEC/EN 61000-6-2
- IEC/EN 61000-6-4
- IEC/EN 61010-1

ETIM classification

ETIM 8.0

EC001438 -
Voltage
monitoring relay